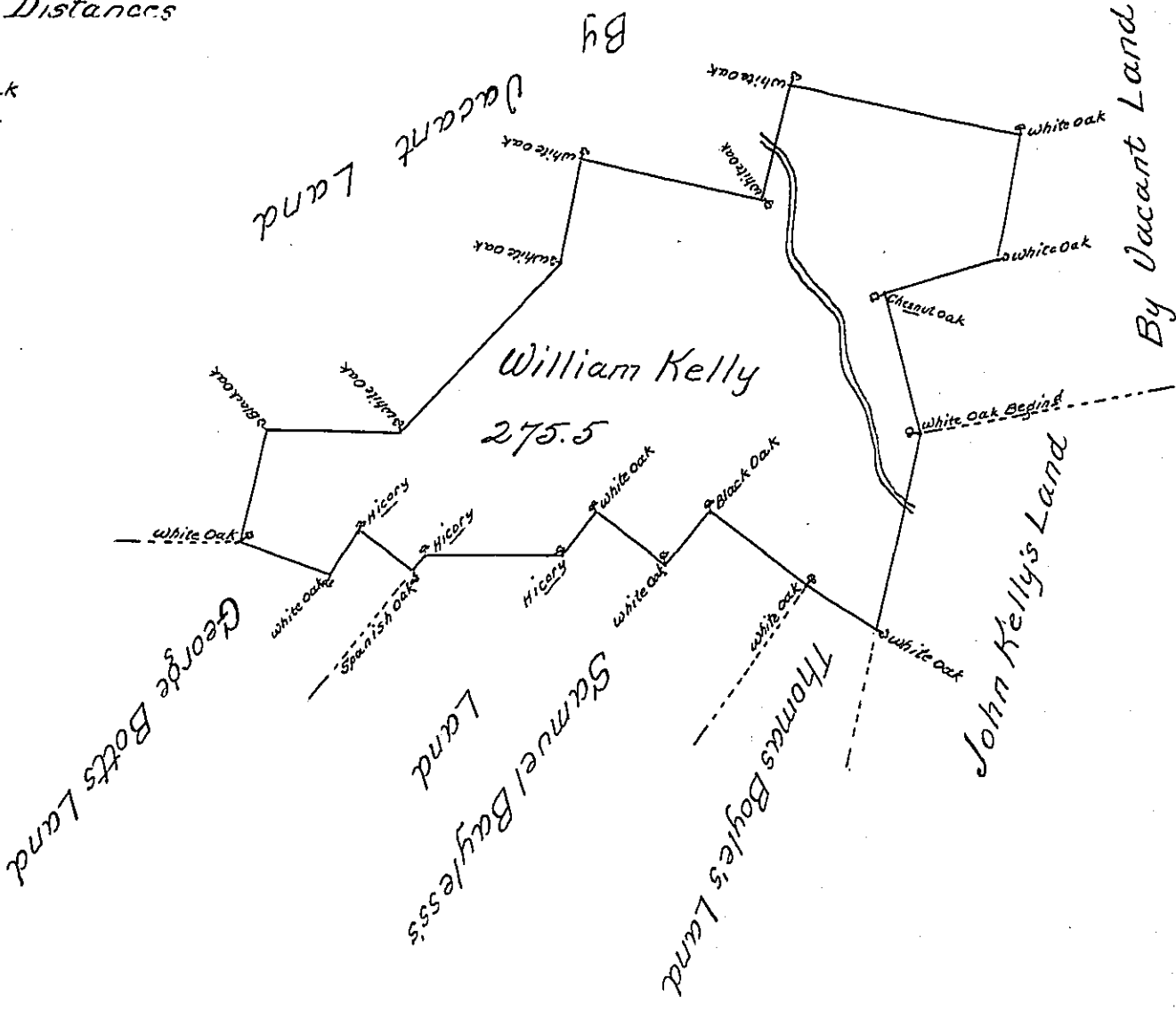


The Courses and Distances from White Oak

- N. 22. W. 66 Chesnut Oak
- N. 68. E. 55 White Oak
- N. 5. E. 63 White Oak
- N. 85. W. 114 White Oak
- S. 5. W. 54 White Oak
- N. 85. W. 90 White Oak
- S. 5. W. 50 White Oak
- S. 37. W. 111 White Oak
- S. 84. W. 65½ Black Oak
- S. 6. W. 53½ White Oak
- S. 79. E. 46 White Oak
- N. 30. E. 26. Hickory
- S. 60. E. 31. Spanish oak
- N. 30. E. 8. Hickory
- N. 83. E. 68 Hickory
- N. 30. E. 24½ White Oak
- S. 60. E. 44 White Oak
- N. 30. E. 32 Black Oak
- S. 60. E. 60. White Oak
- S. 63. E. 39 White Oak
- N. 5. E. 98 to Begin



The Draught of a Tract of Land, called \_\_\_\_\_ situate in Buffalo Township Northumberland County containing Two hundred Seventy Five acres and an Half acre with the usual allowance of Six acres p cent. for Roads Survey'd the first day of May Anns Dom: 1771 In Pursuance of an Order of Survey to William Kelly Bearing Date at Philadelphia the 12th day of June Anns. Dom: No. 3336.

Wm. Maclay

To John Lukens Esqr. S.G. of Pennsylvania

IN TESTIMONY that the above is a copy of the original remaining on file in the Department of Internal Affairs of Pennsylvania, made conformably to an Act of Assembly approved the 16th day of February, 1833, I have hereunto set my Hand and caused the Seal of said Department to be affixed at Harrisburg, this third day of November 1903

*Geo. P. Brown*  
Secretary of Internal Affairs.